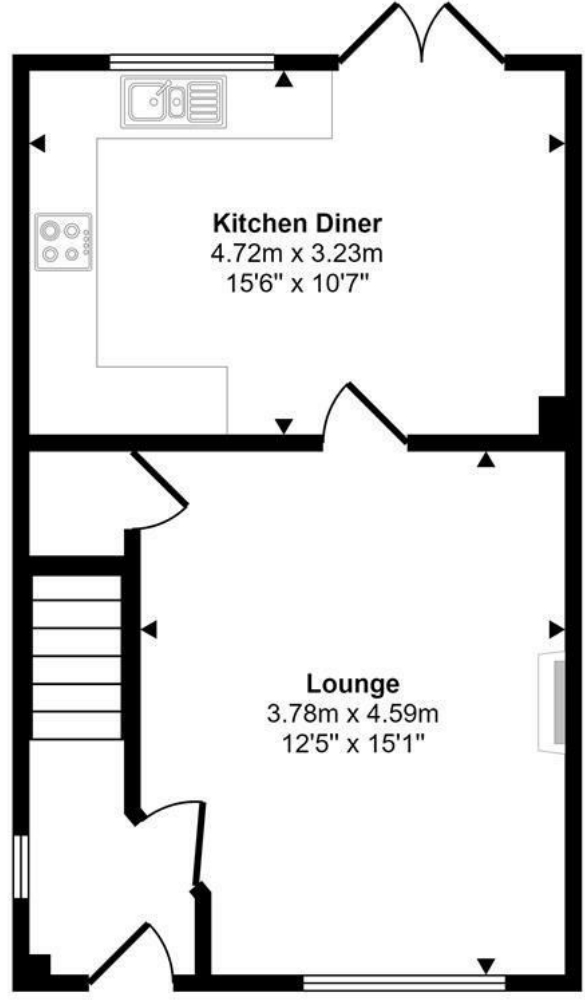


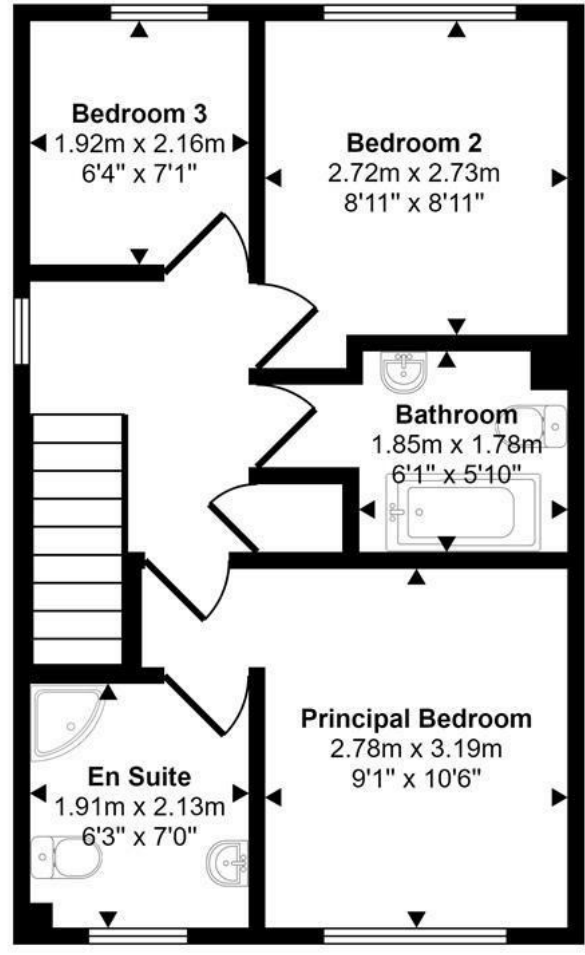


Winstanley Road | Norwich | NR7  
 Guide Price £280,000

Approx Gross Internal Area  
 76 sq m / 823 sq ft



Ground Floor  
 Approx 38 sq m / 408 sq ft



First Floor  
 Approx 39 sq m / 415 sq ft

This floorplan is only for illustrative purposes and is not to scale. Measurements of rooms, doors, windows, and any items are approximate and no responsibility is taken for any error, omission or mis-statement. Icons of items such as bathroom suites are representations only and may not look like the real items. Made with Made Snappy 360.

Energy Efficiency Rating		
	Current	Potential
Very energy efficient - lower running costs		
(92 plus) <b>A</b>		
(81-91) <b>B</b>		
(69-80) <b>C</b>		
(55-68) <b>D</b>		
(39-54) <b>E</b>		
(21-38) <b>F</b>		
(1-20) <b>G</b>		
Not energy efficient - higher running costs		
<b>England &amp; Wales</b>		EU Directive 2002/91/EC

Disclaimer – In accordance with the Property Misdescriptions Act, the company gives notice that all descriptions, references to condition, necessary permissions for use and other details are given in good faith and believed to be correct, but any intending lessees do not rely on them as statements of fact, but must satisfy themselves by inspection or other means, as to their accuracy.

abbotFox presents this stylish, three bedroom semi-detached house. Occupying a generous plot in the popular residential area of Dussindale, this home offers an ideal opportunity for any young family. Situated within easy reach of schools, shops, parks and easy road links into Norwich City Centre and beyond, this home offers a high degree of convenience in its location.

The property itself comprises; entrance hall, lounge and kitchen diner to the ground floor, with three bedrooms, family bathroom and en-suite shower room to the first floor. The generous frontage allows for ample off-road parking and leads to the single garage. The enclosed rear garden is larger than expected and affords a high degree of privacy.

Finished to a high standard throughout, this home demands an internal viewing to be appreciated.

